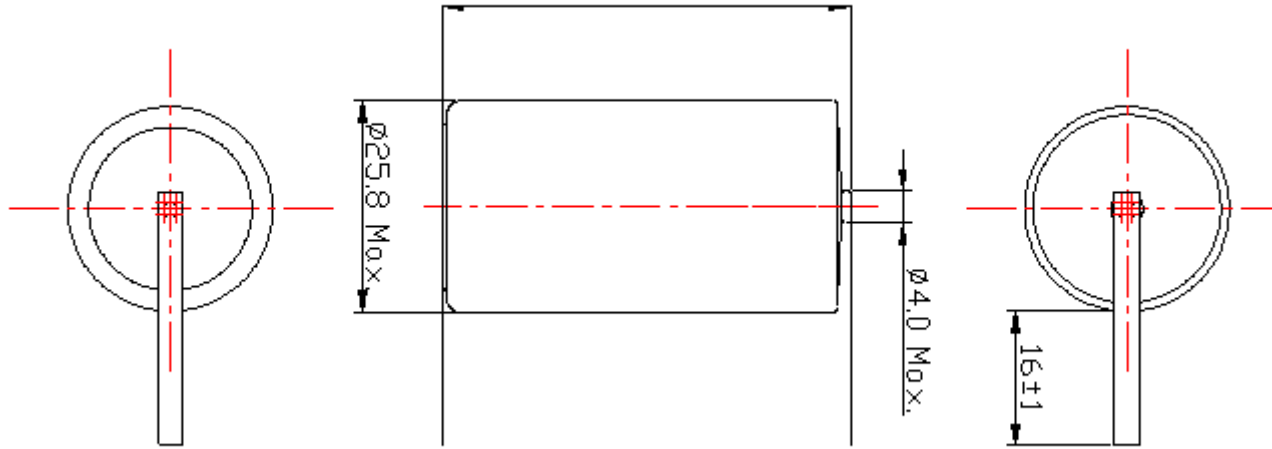


A M D E N	NO.	Date	Revision	Sign
	①			
	②			
	③			



Remarks

- Terminal Material  
Pure Nickel,  
Thickness 0.15mm

Any values are for information purpose only and it can differ from actual condition of usage and are not warranties purpose.

Specifications

Nominal Voltage: 3.6V  
 Nominal Capacity: 8.5Ah  
 Operating Temperature Range: -55~+85'C  
 Case Material: 304 Stainless Steel

Gen.Tol	0.1mm	Title				
Surface		<b>XL-145F/T1</b>				
App.Model	XL-145F					
Projection	3 <sup>RD</sup>	Size	Unit	File No	Date	Scale
Material		A4	MM	NA	01/01/2010	NA
Drawing	Designed	Checked	Approved	<b>Part No. S11-0145-02-00</b>		